



# SPECIFICATION SHEET MAGNETIC CHIP AND PARTS CONVEYOR

Customer Name \_\_\_\_\_

Customer PO # \_\_\_\_\_

Description of Material \_\_\_\_\_

Shape \_\_\_\_\_ Average Size \_\_\_\_\_ Minimum Size \_\_\_\_\_  
Maximum Size \_\_\_\_\_

Material from what type machine \_\_\_\_\_

Material type \_\_\_\_\_

Operating temperature \_\_\_\_\_

Condition of material: \_\_\_\_\_ Dry \_\_\_\_\_ Water-soluble coolant  
\_\_\_\_\_ Cutting oil \_\_\_\_\_ Water \_\_\_\_\_ Other

Is conveyor to be submersed in liquids? \_\_\_\_\_

If so, how far and what is the type of liquid? \_\_\_\_\_

Coolant flow in gallons per minute (if applicable) \_\_\_\_\_

Material capacity required \_\_\_\_\_ LB/HR \_\_\_\_\_

Does material require demagnetizing? \_\_\_\_\_ What degree? \_\_\_\_\_

How will material be fed: Steady feed? \_\_\_\_\_ Surge feed? \_\_\_\_\_

If surge feed, describe \_\_\_\_\_

From what equipment will material be fed? \_\_\_\_\_

Conveyor to discharge - into what? \_\_\_\_\_

Comments: \_\_\_\_\_  
\_\_\_\_\_  
\_\_\_\_\_

### IMPORTANT - SAMPLES REQUIRED

- Fill in every blank or order cannot be processed.
- In order to assure proper application Eriez requires a representative sample of material for testing prior to building a Chip Conveyor.
- Conveyor designs will be based on samples and performance criteria.
- Please submit any available sketches or drawings involving application or problem.

Samples to be returned? \_\_\_\_\_ (For Eriez use only Sample # \_\_\_\_\_)

\_\_\_\_\_  
Representative Signature

\_\_\_\_\_  
Customer Signature

**QUICK DELIVERY**

**APPROVAL DRAWING**

APPROVED AS NOTED

Customer Signature \_\_\_\_\_

Eriez Representative \_\_\_\_\_

**DRIVE INFORMATION**

**POSITION**

STANDARD (AS SHOWN)

OPPOSITE SIDE

**TYPE**

DIRECT DRIVE (STANDARD)

CHAIN DRIVE

**MOTOR**

VOLTAGE \_\_\_\_\_

PHASE \_\_\_\_\_

CYCLES \_\_\_\_\_

**CONVEYOR MODEL & STYLE** \_\_\_\_\_

CONVEYOR SPEED \_\_\_\_\_

MAGNET SPACING \_\_\_\_\_

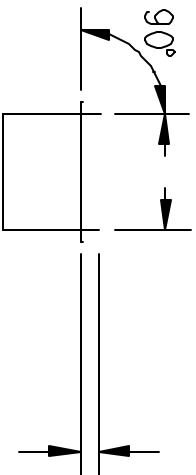
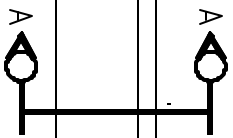
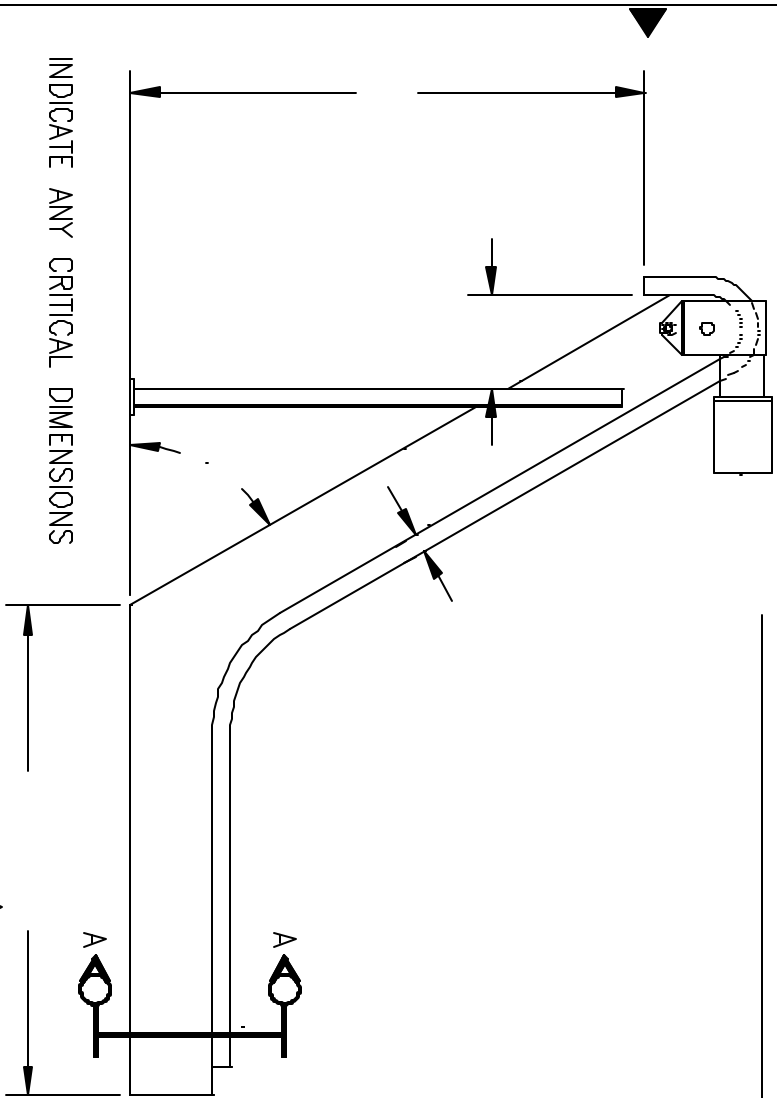
SLIDER PLATE MATERIAL SMOOTH RIGIDIZED (CIRCLE ONE)




FINE IRON DISCHARGE? YES NO (CIRCLE ONE)

LEGS YES NO (CIRCLE ONE)

**PAINT** \_\_\_\_\_

OPTIONS (BE SPECIFIC) \_\_\_\_\_



 <b>ERIEZ MAGNETICS</b> <small>WORLD AUTHORITY IN ADVANCED TECHNOLOGY FOR MAGNETS, VIBRATORS AND METAL DETECTION APPLICATIONS          WORLD HEADQUARTERS, ERIE, PA, USA</small> 	
TITLE _____	
FOR _____	DATE _____
BY _____	DATE _____
SCALE _____	<small>NOTICE - THIS DRAWING INCLUDING THE PRINCIPLE OF DESIGN IS THE PROPERTY OF AND IS CONTROLLED BY ERIEZ MAGNETICS INC. THE APPLICABLE PATENT RIGHTS TO BE PROTECTED, COPIED, OR LOANED IN PART OR IN WHOLE IF IS NOT TO BE USED IN ANY MANNER THAT MAY CONSTITUTE A DIRECT OR INDIRECT INFRINGEMENT TO ERIEZ MAGNETICS. ACCEPTANCE OF THIS DRAWING WILL BE CONSIDERED AS AN AGREEMENT TO THE ABOVE.</small>
ORDER # _____	
<small>PRINTED IN _____</small>	DRAWING NUMBER _____ REVISION _____ 
PRIOR REV _____	ADULT USE

1N-9603334