

Customer Name _____

Customer P.O. No. _____

Eriez Order No. _____

E-Z TEC PHARMACEUTICAL METAL DETECTOR SPECIFICATION SHEET

A. Contaminants to be detected & size: Fe ____, Al ____, Br ____, Cu ____, Stn. Steel ____

B. Product Description _____

C. Product Characteristics:

Dry Wet Mineral Fortification
Type _____

Damp ____% of Moisture

Min ____°F Max ____°F
(if above 150°F, a hi-temp liner is required)

Tablet Capsule

Production Rate _____/Min.

E. Environment:

Temp: low ____°F, high ____°F

Humidity: low ____%, high ____%

Is static electricity present: Yes No

Washdown: City Water Hi-Pressure
(<50 psi) (>50 psi)

Solvents used: Yes No If yes, type: _____

Available power: ____ Volts ____ Cycle ____ Phase
Radios, VFC Metal Detectors

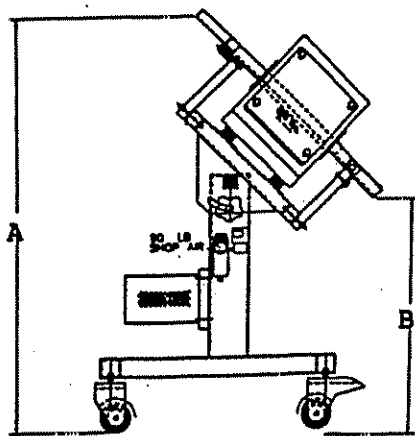
or Inverters in area? Yes No

D. Controls:

Analog MPC

F. Reject Device:

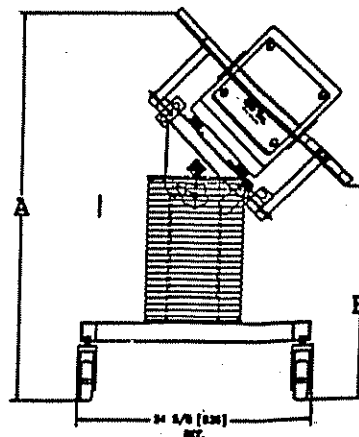
Air Blast Reject Gate



Unit with Standard Fixed Stand

"A" dimension _____ inches

"B" dimension _____ inches



Unit with Optional Telescoping Stand

"A" dimension _____ inches

"B" dimension _____ inches

Select One

II. INTERNAL USE:

E-Z Tec _____

MD Electronics: Analog MPC

Liner: Standard (Product Temp. <150°F) High Temp Hi-Pressure Wash Down (>50 psi)

Constant voltage transformer: Yes No

Transformer attached to stand: Yes No

Headquarters or Field Office Signature

Customer Signature