

Eriez Magnetics Trap Specification Sheet

Customer name: _____

Order # _____

Customer purchase order number: _____

Date: _____

Trap style? Super B Model T Other

Magnet element circuit? _____

Easy To Clean (RE only) Yes No

Construction? Standard Sanitary

O-Ring? Standard Viton Teflon

Flowrate? _____ GPM

Operating pressure? _____ PSI

Product description? _____

Maximum product temperature? _____ °F

Please shade in the appropriate circles. Example

Fine Iron Screens? (ceramic only) Yes No

Model T Traps only:

Swing bolts? Yes No

Nuts? Wing Hex

Product contact area? MS SS

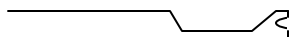
If SS specify: 304SS 316SS

Epoxy coated? Yes No

Hinged cover? Yes No



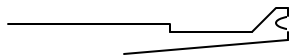
NPT pipe thread



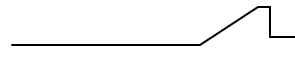
Ferrule end 14 WLMO



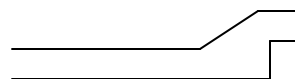
Sanitary (ACME) thread



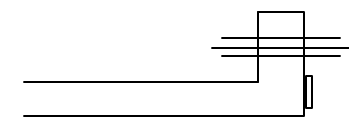
Ferrule end 14 WLMV



Cherry Burrell 14 WI



Cherry Burrell 15 WI



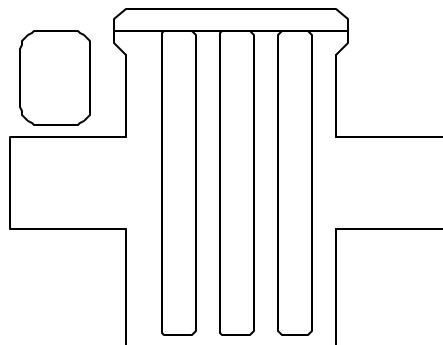
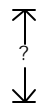
150 # Pipe flange

Face: Flat Raised

Pick one: MS

304 SS 316 SS

Diameter



Other Traps available:

U Trap? Yes No

U Magnet style? Single Double

U Step Material? 300 SS 400 SS

L-2 Trap? Yes No

Screen required? Yes No

If yes: 0.020" 0.033"

If yes: SS Brass

Other Special Requirements:

Headquarters or field office signature

Customer's signature